

How to monitor health systems

Health System Metrics

WHO / World Bank meeting,
Glion, October 6-7 2004

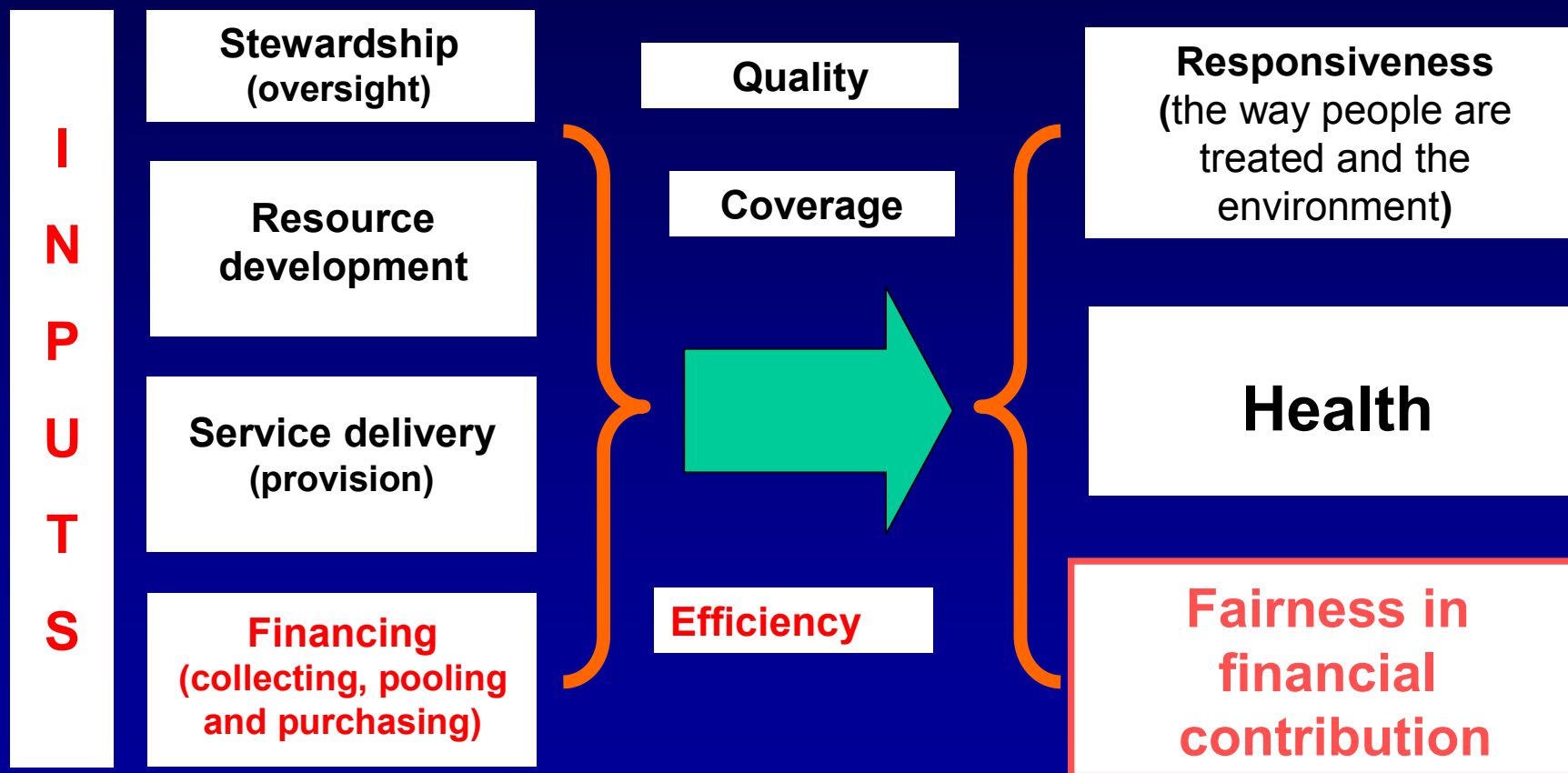
General points

- Limited efforts to agree upon, gather and monitor health system indicators

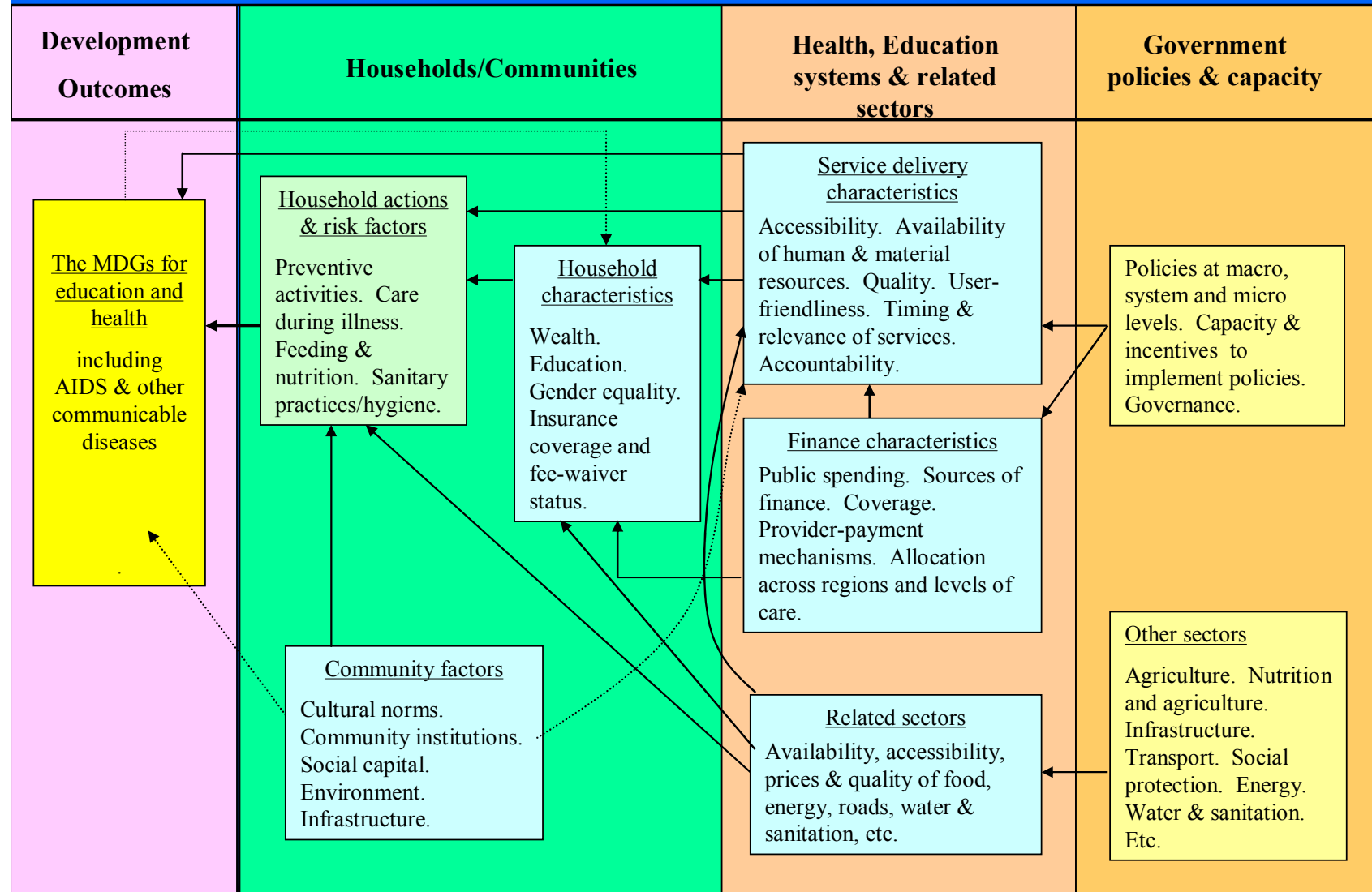
Functions and Goals of Health System

FUNCTIONS THE SYSTEM PERFORMS

GOALS / OUTCOMES OF THE SYSTEM



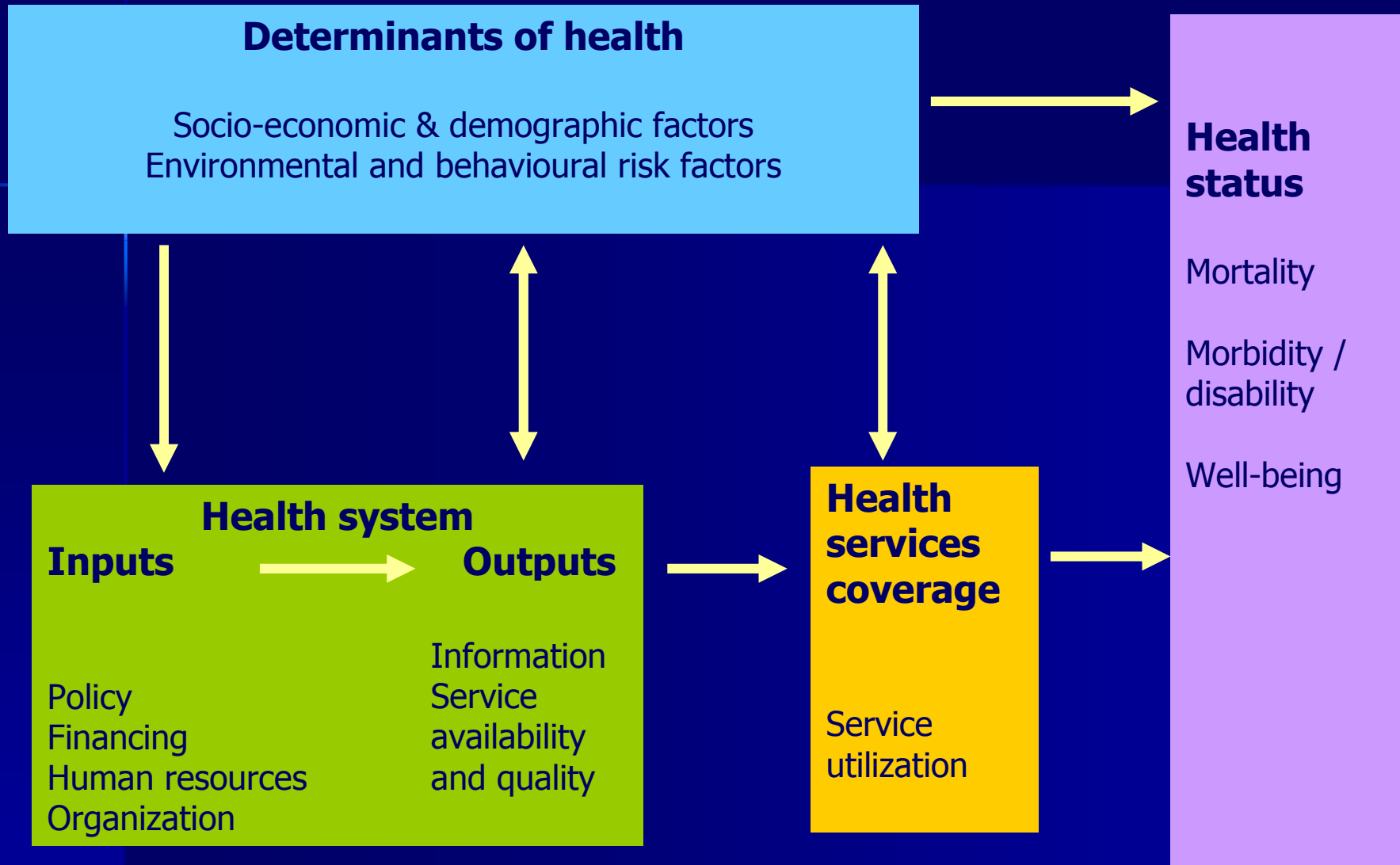
Achieving the MDGs using a Determinants Framework



General points

- Limited efforts to agree upon, gather and monitor health system indicators
- Glion meeting:
 - Focus on actionable items of health systems
 - Focus on measurable items of health system: pre-existing information
- Populating the databases: current information availability and quality a problem
- No standards or benchmarks

World Health Statistics 2005

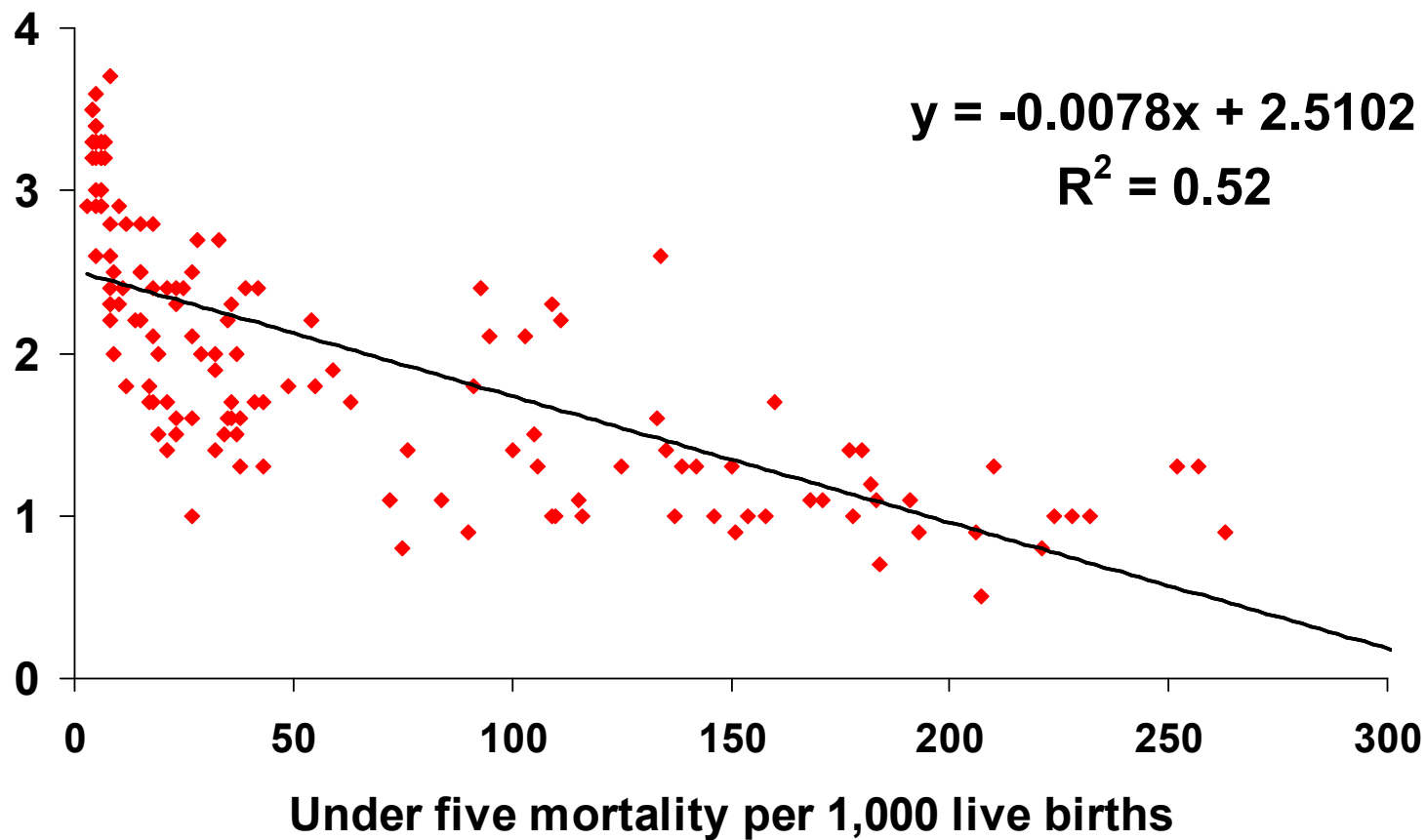


Health system metrics

Financing

	Core	Additional	Under development
Financing	Total health expenditure per capita Fin tracking		
	Total health expenditure as % of GDP		
	General government expenditure on health as % of total general government expenditure		Government expenditure on public health as % of total govt. expenditure
		% of the population incurring catastrophic expenditure Surveys % of the population impoverished as result of out of pocket expenditure	

Health expenditure per capita (log, \$) by level of under-five mortality, all countries



Health system metrics

Human resources for health

<p>Human resources</p>	<p>Health workers per 1,000 population (physicians, assistance doctors, nurses, midwives) Nurse physician ratio (skills mix)</p>	<p>Ratio health worker density in major urban versus rural areas</p>	
	<p>Annual output of health workers by training institutions per 1,000 population</p>		<p>Annual loss of health workers due to specific causes including migration, mortality</p>
		<p>Ratio public sector health worker salary to GDP per capita</p>	

Human resources per 1,000 by level of under-five mortality, all countries

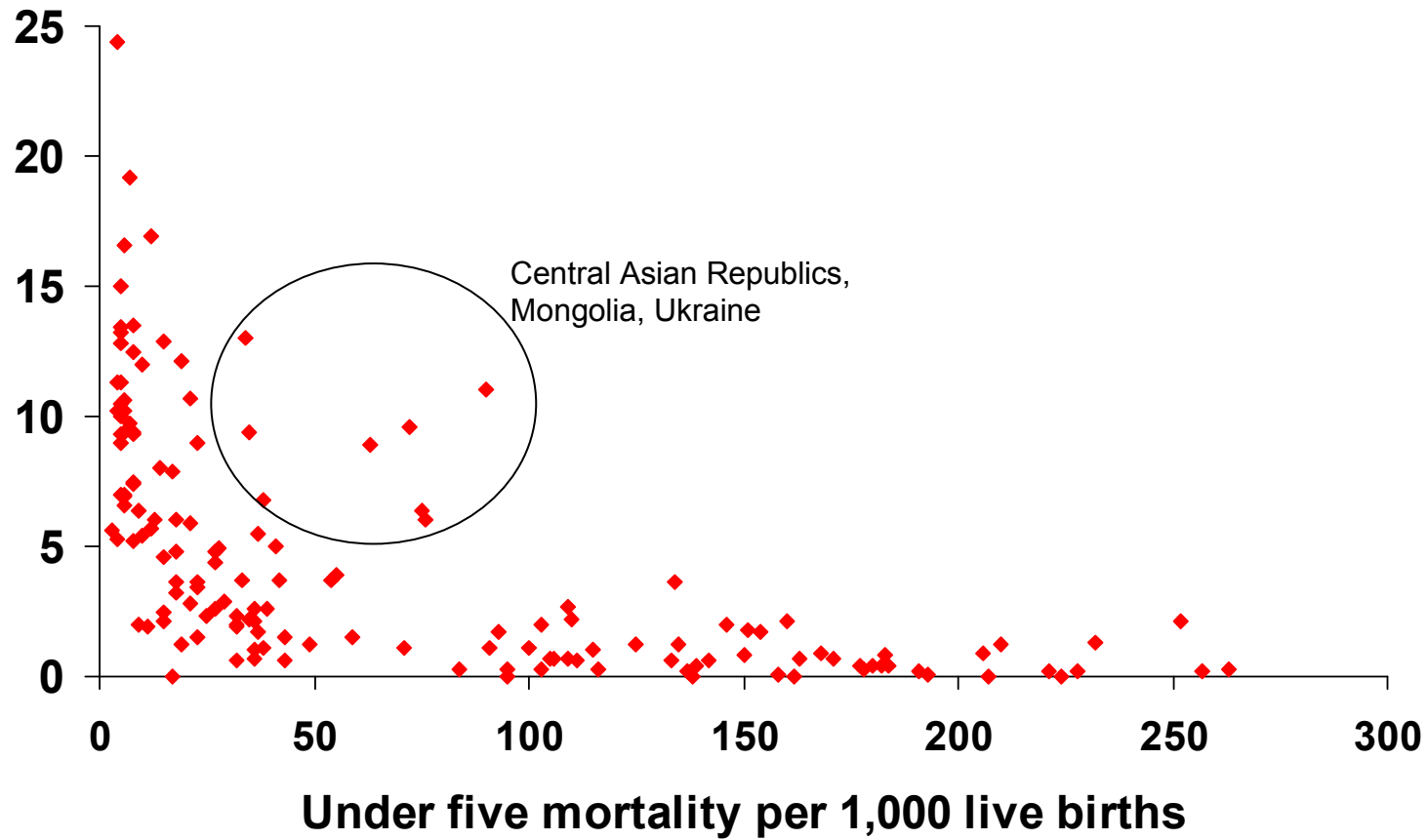
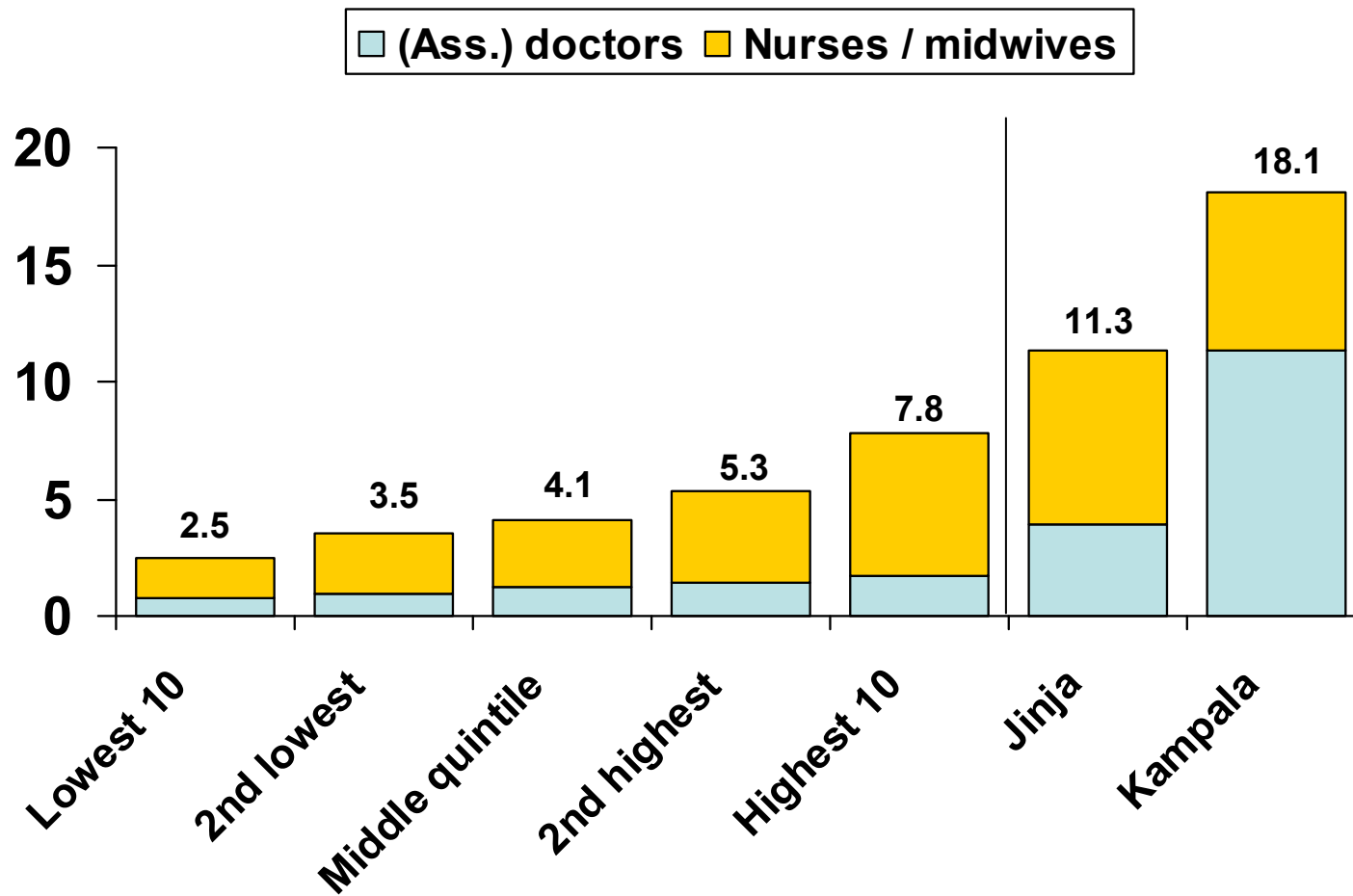


Figure 3

Number of health workers per 10,000 population by rural district quintile, Jinja and Kampala, Uganda SAM, 2004

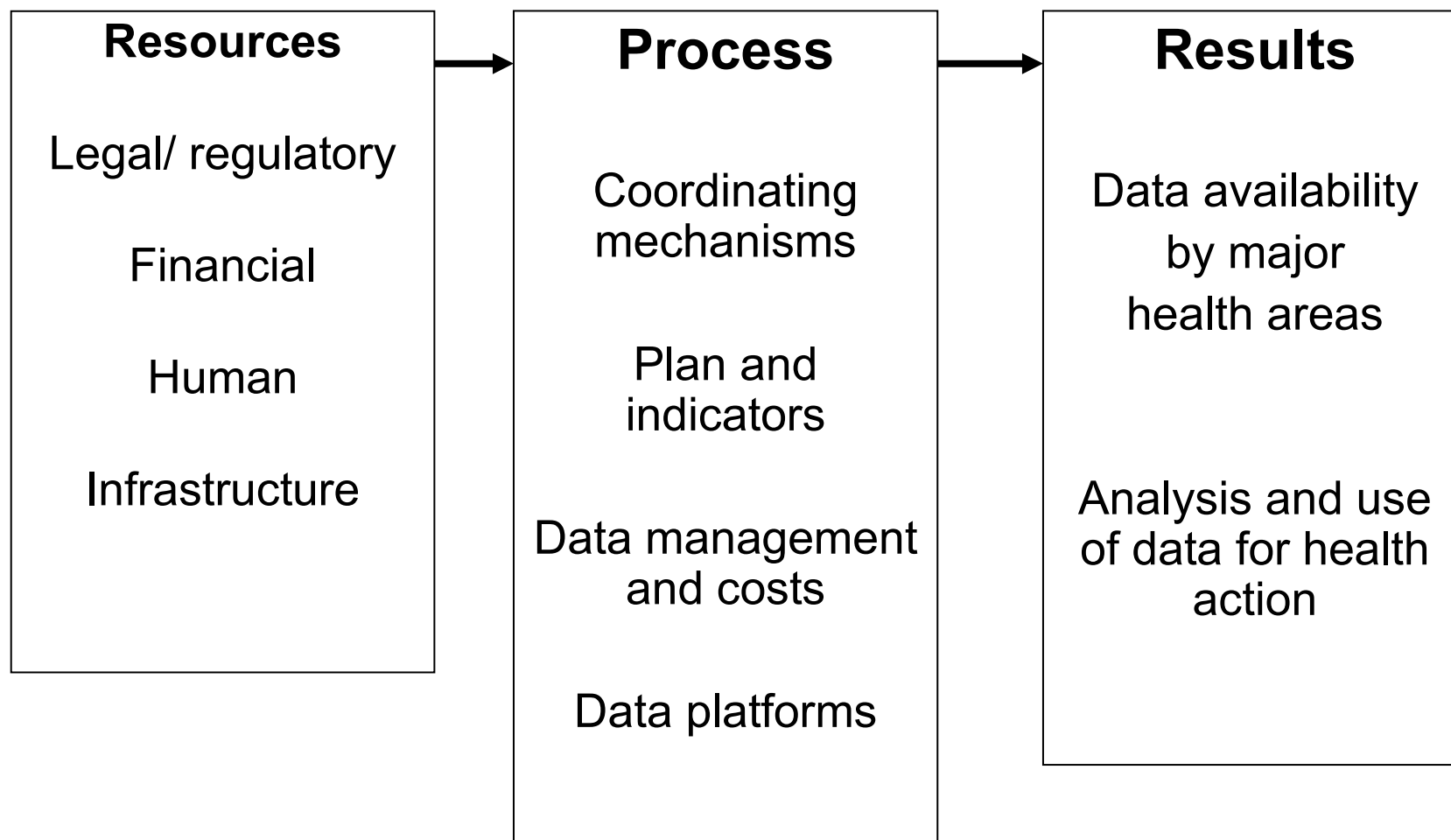


Health system metrics

Information, service delivery, policy & governance

Information	% of estimated deaths that are 'counted'	Availability of key health indicators at national (and subnational) levels	Health information system functioning index (HMNI)

Health information systems index

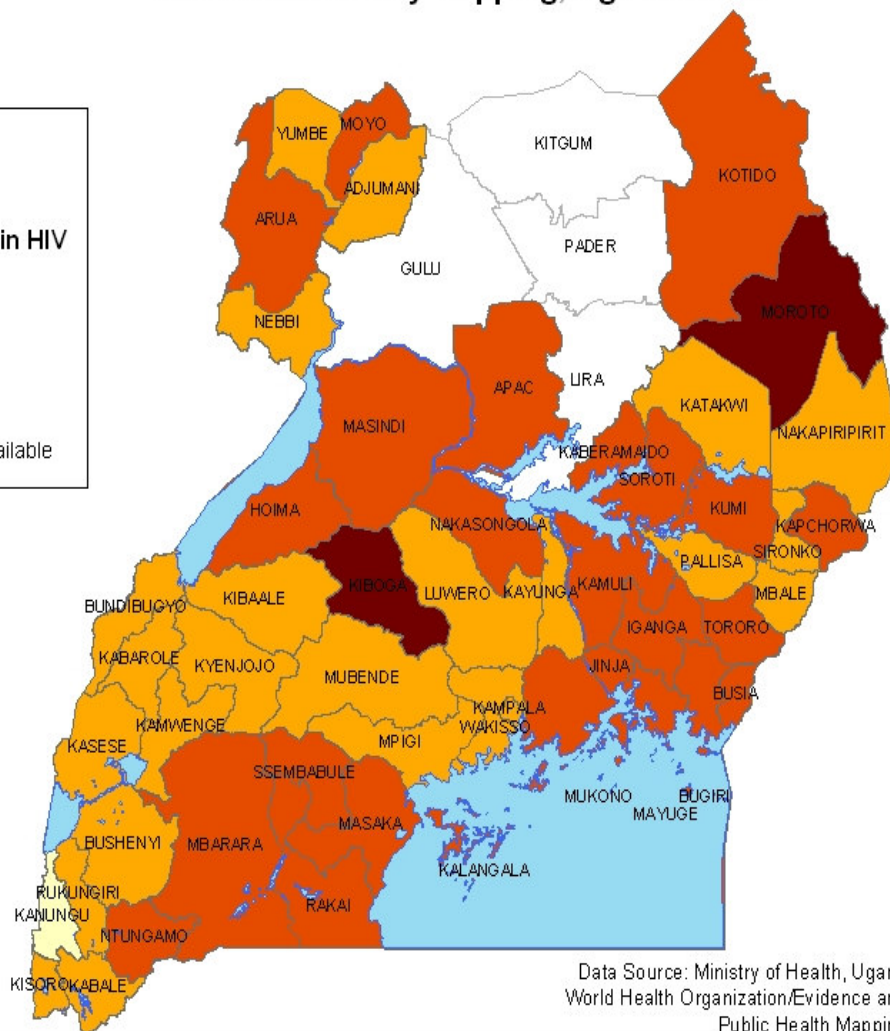
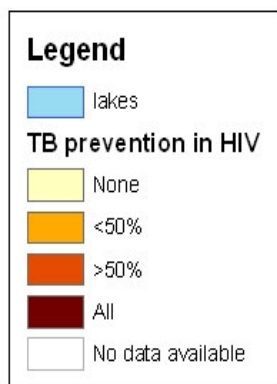


Health system metrics

Information, service delivery, policy & governance

Service delivery	In-patient beds per 1,000 population (should be replaced if better data are available)		<p>% of districts with essential health services available;</p> <p>% of districts with minimum health infrastructure</p> <p><i>Population with access to essential drugs</i></p>

Percent of health facilities with IMCI trained worker Service Availability Mapping, Uganda 2004



Data Source: Ministry of Health, Uganda in collaboration with the World Health Organization/Evidence and Information for Policy and Public Health Mapping and GIS

- **27 districts have more than half of health facilities with at least one health workers trained n IMCI, including 2 districts will full coverage**
- **Most district with lower IMCI coverage are in central and western Uganda**



The presentation of material on the maps contained herein does not imply the expression of any opinion whatsoever on the part of the World Health Organization concerning the legal status of any country, territory, city or areas or of its authorities, or concerning the delineation of its frontiers or boundaries.

© World Health Organization, March 2004

Health system metrics

Information, service delivery, policy & governance

Policy and governance			CPIA for health

Ideas for moving ahead

- Build consensus around core set of indicators with benchmarks for actionable item field
- Develop and support implementation of simple monitoring tools
 - Part of regular information, special tools, (HIS index, GIS / Service Availability Mapping) .. the EPI 30 cluster sample survey for health systems)
 - Subnational / District level focus
 - Support national databases e.g. on HR, financial information
 - Much is basic HIS management information